



ARRIVAL & CHECK-IN PROCESS

Welcome to luxury Glamping at the heart of the British Grand Prix

CHECK-IN TIMES



THURSDAY: 11AM - 8PM

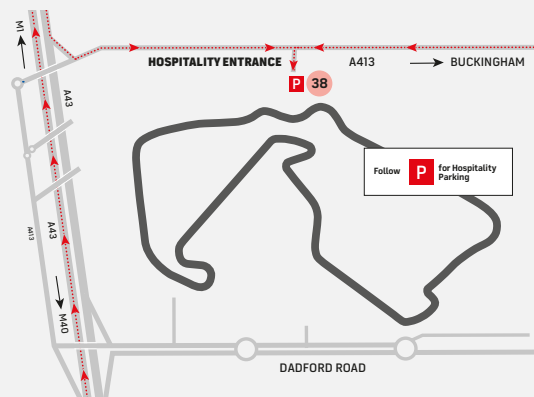
FRIDAY: 8AM - 2PM

If you require assistance on arrival, there will be a reception team on hand to help you.

PARKING

Please follow Red Route, and signs to Hospitality Car Park (CP38). Parking stewards will be on hand to direct you, and there will be an arrivals team waiting to help you to the security check with your luggage.

There will be refreshments available at the Reception Tent before being transferred to your accommodation.



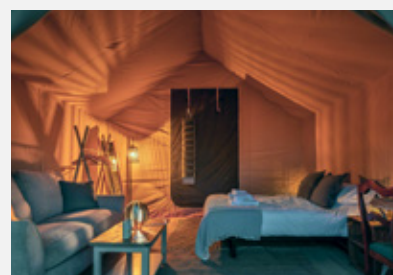
The what3words for the access to Car Park 38 is: **retract.pursuit.thrashing**



Your booking allows for the following number of cars:

2-3 GUESTS: 1 CAR

4-6 GUESTS: 2 CARS



ARRIVING BY PUBLIC TRANSPORT

If you are arriving by taxi or chauffeured vehicle on the Thursday, or before 2pm Friday onwards, you can arrive into Car Park 38 via the same route as above – your driver will then follow the Red Route out of the venue.

ARRIVING ON SITE

Please ensure that you have your Glamping E-Ticket ready for inspection, and place the physical vehicle pass in the windshield – this will have been sent to you in advance, and will be used by the traffic management teams to direct you to the car park.

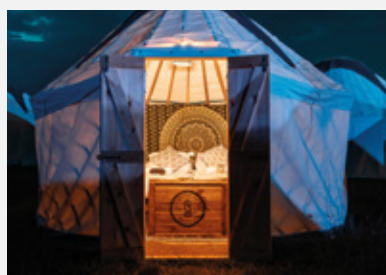
After the security check, a member of the reception team will meet you in the check-in tent where you will be given your wristband and refreshments will be available, before taking the chauffeur service to your accommodation.

CHECK-IN

On arrival at the campsite, you will be greeted by a member of the NOVA reception team, who will arrange for one of our friendly members of staff to show you to your accommodation and leave you to make yourself at home.

ARRIVING AFTER YOUR MAIN PARTY?

No problem at all! Just follow the above instructions for arrival, head to the main reception for check-in.



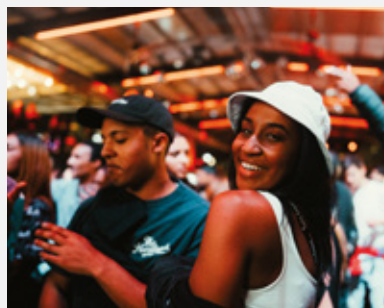
★ TOP TIPS

We'd love you to start your weekend with us as smoothly as possible, so we strongly recommend arriving on Thursday. It's the easiest, quickest way to get settled in and avoid any delays.

If you hold a 3-day event ticket and would like to check in on Thursday, don't worry - we'll send you a Thursday access ticket so you can enter the circuit and check into your accommodation.

If arriving on Thursday isn't possible, you're still welcome to join us on Friday, just be aware that it's a much busier arrival day with traffic management systems in place, and you may experience slower entry and parking compared to Thursday.

- ★ A chauffeur service will take you from the car park to your accommodation.
- ★ Your campsite is in the heart of the action.
- ★ Bed linen and towels will be provided in your tents upon arrival.
- ★ We recommend you bring spare towels and warm clothes for your stay.
- ★ Power sockets are provided within your glamping tent, please note only low voltage items can be used e.g., phone and tablet chargers.
- ★ Open times for catering and additional services provided will be displayed onsite, the reception desk will be manned 24/7 should you have any additional queries during your stay.



FACILITIES – YOUR HOME FROM HOME



HOT SHOWERS



LUXURY TOILETS



FREE WI-FI



CONCIERGE



SECURE STORAGE



PAMPER TENT



POWER SOCKETS

BREAKFAST

As part of your stay, you will receive a complimentary breakfast at the restaurant each morning.

EVENING MEAL

A choice of world class food is available from The Smokery and The Salon Restaurant during your stay. To avoid disappointment book in advance here: www.eventistsilverstone.co.uk/nova



CHECK-OUT

Final check-out is at 12pm on Monday. You will be required to book a time slot for the return chauffeur service back to your car. Please head to the reception at any point across the weekend to pre-book your time slot. You will be given a 15-minute time slot for collection. This service is provided on a first come first served basis.



15-minute time slots will be available between the below times, depending on your booked departure day:

SUNDAY 6PM-10PM

MONDAY 8AM-12PM

PROHIBITED ITEMS

Please take note of the prohibited items at the Glamping site ahead of your stay with us.

- × Monkeybikes, Minimoto, Pit Bikes, Scooters, Segways & Quads
- × Generators & BBQ Gas cylinders
- × Sound systems capable of creating excessive noise
- × Campfires, firewood & fire starters
- × Fireworks
- × Alcohol
- × Restricted & illegal substances
- × Offensive weapons
- × Paddling pools, swimming pools & hot tubs
- × Pet animals except for assistance dogs
- × Items that are deemed dangerous, offensive or unsuitable for the safe environment of the Campsite by Campsite Staff
- × We do not allow drones of any type to be brought on to or operated at any Silverstone Campsite

